



Anel Espiral



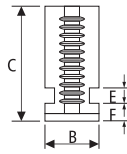
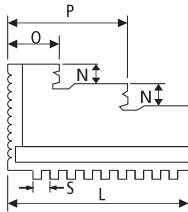
Pinhão



Chave para placa



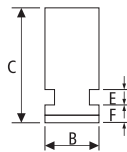
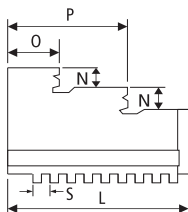
Castanhas Monobloco Externa



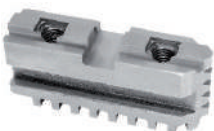
Diâmetro Placa	C	L	B	F	E	N	P	O	S
100	38	42	15	6.5	7	7	28	14	6
125	45	56	16	7	8	9	38	18	6
160	54	70	18.5	9	10	12	47	22	8
200	61	85	22	10	10	12	57	28	8
250	69	105	27	12	10	12	70	34	10
315	86	127	36	13.5	13	17	84	42	11
400	91	140	36	13.5	13	17	94.5	42.5	11
500	100.5	180	45	14.8	16	24	123	54	13



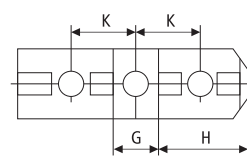
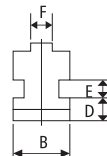
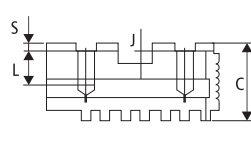
Castanhas Monobloco Interna



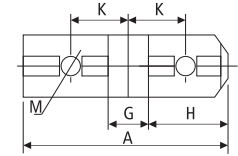
Diâmetro Placa	C	L	B	F	E	N	P	O	S
100	38	42	15	6.5	7	7	28	14	6
125	45	56	16	7	8	9	38	18	6
160	54	70	18.5	9	10	12	47	22	8
200	61	85	22	10	10	12	57	28	8
250	69	105	27	12	10	12	70	34	10
315	86	127	36	13.5	13	17	84	42	11
400	91	140	36	13.5	13	17	94.5	42.5	11
500	100.5	180	45	14.8	16	24	123	54	13



Castanhas Base



12" Diâmetro

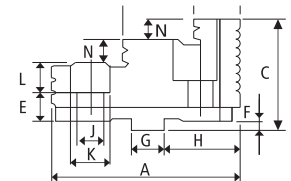
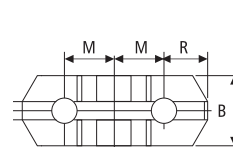


5" a 10" Diâmetro

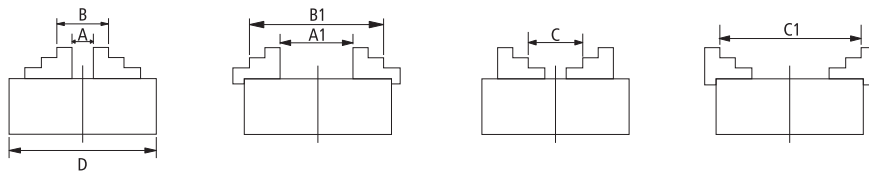
Diâmetro Placa	K	H	G	F	J	S	L	D	E	B	OAL A	Rosca
160	19.05	28.60	12.69	7.94	4	3.2	17	9	10	20	64	M10
200	22.20	34.90	12.69	7.94	4	3.2	17	10	10	22	80	M10
250	27.00	39.70	19.04	12.7	4	3.2	17	12	10	27	98	M12
315	31.75	47.60	19.04	12.7	4	3.2	21	13.5	13	36	110	M12



Castanhas Sobreposta



Diâmetro Placa	M	H	G	J	K	D	E	F	N	C	B	OAL A	O	P
160	19.05	28.60	12.69	9	14	7.94	4	3.2	9	41	25	68	20.5	44.9
200	22.20	34.90	12.69	11	17	7.94	4	3.2	10.5	45	30	80	25	53
250	27.00	39.70	19.04	13	19	12.70	4	3.2	13.5	53	36	95	29	64
315	31.75	47.60	19.04	13	19	12.70	4	3.2	17.5	61	42	108	31	76.5



Placa (D)	Castanha Interna		Castanha Externa	
	Faixa de Fixação			
	A-A1	B-B1	C-C1	
80	2-22	25-70	22-63	
100	2-30	30-90	30-80	
125	2.5-40	38-125	38-110	
160	3-55	50-160	55-145	
200	4-85	65-200	65-200	
250	6-110	80-250	90-250	
315	10-140	95-315	100-315	
400	15-210	120-400	120-400	
500	25-280	150-500	150-500	