

FURAÇÃO(METAL DURO INTEIRIÇO)

MVE

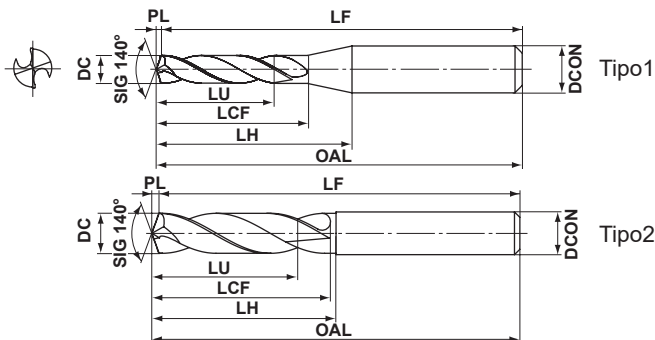
BROCAS WSTAR

- Classe DP1020 com cobertura PVD oferece longa vida útil em diversos materiais.
- O novo perfil ondulado da aresta proporciona excelente agudez e resistência, melhorando o controle do desgaste periférico.



P	M	K	N	S	H
Aço	Aço Inoxidável	Ferro Fundido	Metais Não Ferrosos	Ligas Resist. ao Calor	Aço Endurecido

Refrigeração Externa



DC=3	3<DC≤6	6<DC≤10	10<DC≤18	18<DC≤20
0 -0.014	0 -0.018	0 -0.022	0 -0.027	0 -0.033
DCON=3	3<DCON≤6	6<DCON≤10	10<DCON≤18	18<DCON≤20
0 -0.006	0 -0.008	0 -0.009	0 -0.011	0 -0.013

DC (mm)	Prof. do Furo (L/D)	DP1020	Referência para Pedido	Dimensões (mm)							Tipo
				LU	LCF	LH	OAL	LF	PL	DCON	
3.0	2	●	MVE0300X02S030	6.5	16.5	16.5	55.5	55	0.5	3	2
3.0	2	●	MVE0300X02S060	6.5	16.5	19.7	55.5	55	0.5	6	1
3.0	3	●	MVE0300X03S030	9.5	21.5	21.5	60.5	60	0.5	3	2
3.0	3	●	MVE0300X03S060	9.5	21.5	24.7	60.5	60	0.5	6	1
3.1	2	●	MVE0310X02S040	6.8	18.6	20.6	55.6	55	0.6	4	2
3.1	2	●	MVE0310X02S060	6.8	18.6	21.7	55.6	55	0.6	6	1
3.1	3	●	MVE0310X03S040	9.9	24.6	26.6	60.6	60	0.6	4	2
3.1	3	●	MVE0310X03S060	9.9	24.6	27.7	60.6	60	0.6	6	1
3.2	2	●	MVE0320X02S040	7.0	18.6	20.6	55.6	55	0.6	4	2
3.2	2	●	MVE0320X02S060	7.0	18.6	21.6	55.6	55	0.6	6	1
3.2	3	●	MVE0320X03S040	10.2	24.6	26.6	60.6	60	0.6	4	2
3.2	3	●	MVE0320X03S060	10.2	24.6	27.6	60.6	60	0.6	6	1
3.3	2	●	MVE0330X02S040	7.2	18.6	20.6	55.6	55	0.6	4	2
3.3	2	●	MVE0330X02S060	7.2	18.6	21.5	55.6	55	0.6	6	1
3.3	3	●	MVE0330X03S040	10.5	24.6	26.6	60.6	60	0.6	4	2
3.3	3	●	MVE0330X03S060	10.5	24.6	27.5	60.6	60	0.6	6	1
3.4	2	●	MVE0340X02S040	7.4	18.6	20.6	55.6	55	0.6	4	2
3.4	2	●	MVE0340X02S060	7.4	18.6	21.4	55.6	55	0.6	6	1
3.4	3	●	MVE0340X03S040	10.8	24.6	26.6	60.6	60	0.6	4	2
3.4	3	●	MVE0340X03S060	10.8	24.6	27.4	60.6	60	0.6	6	1
3.5	2	●	MVE0350X02S040	7.6	18.6	20.6	55.6	55	0.6	4	2
3.5	2	●	MVE0350X02S060	7.6	18.6	21.3	55.6	55	0.6	6	1
3.5	3	●	MVE0350X03S040	11.1	24.6	26.6	60.6	60	0.6	4	2
3.5	3	●	MVE0350X03S060	11.1	24.6	27.3	60.6	60	0.6	6	1
3.6	2	●	MVE0360X02S040	7.9	20.7	20.7	55.7	55	0.7	4	2
3.6	2	●	MVE0360X02S060	7.9	20.7	23.3	55.7	55	0.7	6	1
3.6	3	●	MVE0360X03S040	11.5	27.7	27.7	60.7	60	0.7	4	2
3.6	3	●	MVE0360X03S060	11.5	27.7	30.3	60.7	60	0.7	6	1
3.7	2	●	MVE0370X02S040	8.1	20.7	20.7	55.7	55	0.7	4	2
3.7	2	●	MVE0370X02S060	8.1	20.7	23.2	55.7	55	0.7	6	1
3.7	3	●	MVE0370X03S040	11.8	27.7	27.7	60.7	60	0.7	4	2
3.7	3	●	MVE0370X03S060	11.8	27.7	30.2	60.7	60	0.7	6	1

DC (mm)	Prof. do Furo (L/D)	DP1020	Referência para Pedido	Dimensões (mm)							Tipo
				LU	LCF	LH	OAL	LF	PL	DCON	
3.8	2	●	MVE0380X02S040	8.3	20.7	20.7	55.7	55	0.7	4	2
3.8	2	●	MVE0380X02S060	8.3	20.7	23.1	55.7	55	0.7	6	1
3.8	3	●	MVE0380X03S040	12.1	27.7	27.7	60.7	60	0.7	4	2
3.8	3	●	MVE0380X03S060	12.1	27.7	30.1	60.7	60	0.7	6	1
3.9	2	●	MVE0390X02S040	8.5	20.7	20.7	55.7	55	0.7	4	2
3.9	2	●	MVE0390X02S060	8.5	20.7	23.0	55.7	55	0.7	6	1
3.9	3	●	MVE0390X03S040	12.4	27.7	27.7	60.7	60	0.7	4	2
3.9	3	●	MVE0390X03S060	12.4	27.7	30.0	60.7	60	0.7	6	1
4.0	2	●	MVE0400X02S040	8.7	20.7	20.7	55.7	55	0.7	4	2
4.0	2	●	MVE0400X02S060	8.7	20.7	22.8	55.7	55	0.7	6	1
4.0	3	●	MVE0400X03S040	12.7	27.7	27.7	60.7	60	0.7	4	2
4.0	3	●	MVE0400X03S060	12.7	27.7	29.8	60.7	60	0.7	6	1
4.1	2	●	MVE0410X02S050	8.9	22.7	24.7	62.7	62	0.7	5	2
4.1	2	●	MVE0410X02S060	8.9	22.7	24.7	62.7	62	0.7	6	1
4.1	3	●	MVE0410X03S050	13.0	29.7	31.7	68.7	68	0.7	5	2
4.1	3	●	MVE0410X03S060	13.0	29.7	31.7	68.7	68	0.7	6	1
4.2	2	●	MVE0420X02S050	9.2	22.8	24.8	62.8	62	0.8	5	2
4.2	2	●	MVE0420X02S060	9.2	22.8	24.7	62.8	62	0.8	6	1
4.2	3	●	MVE0420X03S050	13.4	29.8	31.8	68.8	68	0.8	5	2
4.2	3	●	MVE0420X03S060	13.4	29.8	31.7	68.8	68	0.8	6	1
4.3	2	●	MVE0430X02S050	9.4	22.8	24.8	62.8	62	0.8	5	2
4.3	2	●	MVE0430X02S060	9.4	22.8	24.6	62.8	62	0.8	6	1
4.3	3	●	MVE0430X03S050	13.7	29.8	31.8	68.8	68	0.8	5	2
4.3	3	●	MVE0430X03S060	13.7	29.8	31.6	68.8	68	0.8	6	1
4.4	2	●	MVE0440X02S050	9.6	22.8	24.8	62.8	62	0.8	5	2
4.4	2	●	MVE0440X02S060	9.6	22.8	24.5	62.8	62	0.8	6	1
4.4	3	●	MVE0440X03S050	14.0	29.8	31.8	68.8	68	0.8	5	2
4.4	3	●	MVE0440X03S060	14.0	29.8	31.5	68.8	68	0.8	6	1
4.5	2	●	MVE0450X02S050	9.8	22.8	24.8	62.8	62	0.8	5	2
4.5	2	●	MVE0450X02S060	9.8	22.8	24.4	62.8	62	0.8	6	1
4.5	3	●	MVE0450X03S050	14.3	29.8	31.8	68.8	68	0.8	5	2
4.5	3	●	MVE0450X03S060	14.3	29.8	31.4	68.8	68	0.8	6	1

● : Estoque mantido.

DC (mm)	Prof. do Furo (L/D)	DP1020	Referência para Pedido	Dimensões (mm)							Tipo
				LU	LCF	LH	OAL	LF	PL	DCON	
4.6	2	●	MVE0460X02S050	10.0	24.8	24.8	62.8	62	0.8	5	2
4.6	2	●	MVE0460X02S060	10.0	24.8	27.8	62.8	62	0.8	6	2
4.6	3	●	MVE0460X03S050	14.6	32.8	32.8	68.8	68	0.8	5	2
4.6	3	●	MVE0460X03S060	14.6	32.8	35.8	68.8	68	0.8	6	2
4.7	2	●	MVE0470X02S050	10.3	24.9	24.9	62.9	62	0.9	5	2
4.7	2	●	MVE0470X02S060	10.3	24.9	27.9	62.9	62	0.9	6	2
4.7	3	●	MVE0470X03S050	15.0	32.9	32.9	68.9	68	0.9	5	2
4.7	3	●	MVE0470X03S060	15.0	32.9	35.9	68.9	68	0.9	6	2
4.8	2	●	MVE0480X02S050	10.5	24.9	24.9	62.9	62	0.9	5	2
4.8	2	●	MVE0480X02S060	10.5	24.9	27.9	62.9	62	0.9	6	2
4.8	3	●	MVE0480X03S050	15.3	32.9	32.9	68.9	68	0.9	5	2
4.8	3	●	MVE0480X03S060	15.3	32.9	35.9	68.9	68	0.9	6	2
4.9	2	●	MVE0490X02S050	10.7	24.9	24.9	62.9	62	0.9	5	2
4.9	2	●	MVE0490X02S060	10.7	24.9	27.9	62.9	62	0.9	6	2
4.9	3	●	MVE0490X03S050	15.6	32.9	32.9	68.9	68	0.9	5	2
4.9	3	●	MVE0490X03S060	15.6	32.9	35.9	68.9	68	0.9	6	2
5.0	2	●	MVE0500X02S050	10.9	24.9	24.9	62.9	62	0.9	5	2
5.0	2	●	MVE0500X02S060	10.9	24.9	27.9	62.9	62	0.9	6	2
5.0	3	●	MVE0500X03S050	15.9	32.9	32.9	68.9	68	0.9	5	2
5.0	3	●	MVE0500X03S060	15.9	32.9	35.9	68.9	68	0.9	6	2
5.1	2	●	MVE0510X02S060	11.1	26.9	28.9	66.9	66	0.9	6	2
5.1	3	●	MVE0510X03S060	16.2	34.9	36.9	74.9	74	0.9	6	2
5.2	2	●	MVE0520X02S060	11.3	26.9	28.9	66.9	66	0.9	6	2
5.2	3	●	MVE0520X03S060	16.5	34.9	36.9	74.9	74	0.9	6	2
5.3	2	●	MVE0530X02S060	11.6	27.0	29.0	67.0	66	1.0	6	2
5.3	3	●	MVE0530X03S060	16.9	35.0	37.0	75.0	74	1.0	6	2
5.4	2	●	MVE0540X02S060	11.8	27.0	29.0	67.0	66	1.0	6	2
5.4	3	●	MVE0540X03S060	17.2	35.0	37.0	75.0	74	1.0	6	2
5.5	2	●	MVE0550X02S060	12.0	27.0	29.0	67.0	66	1.0	6	2
5.5	3	●	MVE0550X03S060	17.5	35.0	37.0	75.0	74	1.0	6	2
5.6	2	●	MVE0560X02S060	12.2	29.0	29.0	67.0	66	1.0	6	2
5.6	3	●	MVE0560X03S060	17.8	37.0	37.0	75.0	74	1.0	6	2
5.7	2	●	MVE0570X02S060	12.4	29.0	29.0	67.0	66	1.0	6	2
5.7	3	●	MVE0570X03S060	18.1	37.0	37.0	75.0	74	1.0	6	2
5.8	2	●	MVE0580X02S060	12.7	29.1	29.1	67.1	66	1.1	6	2
5.8	3	●	MVE0580X03S060	18.5	37.1	37.1	75.1	74	1.1	6	2
5.9	2	●	MVE0590X02S060	12.9	29.1	29.1	67.1	66	1.1	6	2
5.9	3	●	MVE0590X03S060	18.8	37.1	37.1	75.1	74	1.1	6	2
6.0	2	●	MVE0600X02S060	13.1	29.1	29.1	67.1	66	1.1	6	2
6.0	3	●	MVE0600X03S060	19.1	37.1	37.1	75.1	74	1.1	6	2
6.1	2	●	MVE0610X02S070	13.3	32.1	35.1	75.1	74	1.1	7	2
6.1	2	●	MVE0610X02S080	13.3	32.1	35.1	75.1	74	1.1	8	2
6.1	3	●	MVE0610X03S070	19.4	42.1	45.1	84.1	83	1.1	7	2
6.1	3	●	MVE0610X03S080	19.4	42.1	45.1	84.1	83	1.1	8	2
6.2	2	●	MVE0620X02S070	13.5	32.1	35.1	75.1	74	1.1	7	2
6.2	2	●	MVE0620X02S080	13.5	32.1	35.1	75.1	74	1.1	8	2
6.2	3	●	MVE0620X03S070	19.7	42.1	45.1	84.1	83	1.1	7	2
6.2	3	●	MVE0620X03S080	19.7	42.1	45.1	84.1	83	1.1	8	2

DC (mm)	Prof. do Furo (L/D)	DP1020	Referência para Pedido	Dimensões (mm)							Tipo
				LU	LCF	LH	OAL	LF	PL	DCON	
6.3	2	●	MVE0630X02S070	13.7	32.1	35.1	75.1	74	1.1	7	2
6.3	2	●	MVE0630X02S080	13.7	32.1	35.1	75.1	74	1.1	8	2
6.3	3	●	MVE0630X03S070	20.0	42.1	45.1	84.1	83	1.1	7	2
6.3	3	●	MVE0630X03S080	20.0	42.1	45.1	84.1	83	1.1	8	2
6.4	2	●	MVE0640X02S070	14.0	32.2	35.2	75.2	74	1.2	7	2
6.4	2	●	MVE0640X02S080	14.0	32.2	35.2	75.2	74	1.2	8	2
6.4	3	●	MVE0640X03S070	20.4	42.2	45.2	84.2	83	1.2	7	2
6.4	3	●	MVE0640X03S080	20.4	42.2	45.2	84.2	83	1.2	8	2
6.5	2	●	MVE0650X02S070	14.2	32.2	35.2	75.2	74	1.2	7	2
6.5	2	●	MVE0650X02S080	14.2	32.2	35.2	75.2	74	1.2	8	2
6.5	3	●	MVE0650X03S070	20.7	42.2	45.2	84.2	83	1.2	7	2
6.5	3	●	MVE0650X03S080	20.7	42.2	45.2	84.2	83	1.2	8	2
6.6	2	●	MVE0660X02S070	14.4	35.2	35.2	75.2	74	1.2	7	2
6.6	2	●	MVE0660X02S080	14.4	35.2	37.2	75.2	74	1.2	8	2
6.6	3	●	MVE0660X03S070	21.0	44.2	44.2	84.2	83	1.2	7	2
6.6	3	●	MVE0660X03S080	21.0	44.2	46.2	84.2	83	1.2	8	2
6.7	2	●	MVE0670X02S070	14.6	35.2	35.2	75.2	74	1.2	7	2
6.7	2	●	MVE0670X02S080	14.6	35.2	37.2	75.2	74	1.2	8	2
6.7	3	●	MVE0670X03S070	21.3	44.2	44.2	84.2	83	1.2	7	2
6.7	3	●	MVE0670X03S080	21.3	44.2	46.2	84.2	83	1.2	8	2
6.8	2	●	MVE0680X02S070	14.8	35.2	35.2	75.2	74	1.2	7	2
6.8	2	●	MVE0680X02S080	14.8	35.2	37.2	75.2	74	1.2	8	2
6.8	3	●	MVE0680X03S070	21.6	44.2	44.2	84.2	83	1.2	7	2
6.8	3	●	MVE0680X03S080	21.6	44.2	46.2	84.2	83	1.2	8	2
6.9	2	●	MVE0690X02S070	15.1	35.3	35.3	75.3	74	1.3	7	2
6.9	2	●	MVE0690X02S080	15.1	35.3	37.3	75.3	74	1.3	8	2
6.9	3	●	MVE0690X03S070	22.0	44.3	44.3	84.3	83	1.3	7	2
6.9	3	●	MVE0690X03S080	22.0	44.3	46.3	84.3	83	1.3	8	2
7.0	2	●	MVE0700X02S070	15.3	35.3	35.3	75.3	74	1.3	7	2
7.0	2	●	MVE0700X02S080	15.3	35.3	37.3	75.3	74	1.3	8	2
7.0	3	●	MVE0700X03S070	22.3	44.3	44.3	84.3	83	1.3	7	2
7.0	3	●	MVE0700X03S080	22.3	44.3	46.3	84.3	83	1.3	8	2
7.1	2	●	MVE0710X02S080	15.5	35.3	38.3	80.3	79	1.3	8	2
7.1	3	●	MVE0710X03S080	22.6	46.3	49.3	91.3	90	1.3	8	2
7.2	2	●	MVE0720X02S080	15.7	35.3	38.3	80.3	79	1.3	8	2
7.2	3	●	MVE0720X03S080	22.9	46.3	49.3	91.3	90	1.3	8	2
7.3	2	●	MVE0730X02S080	15.9	35.3	38.3	80.3	79	1.3	8	2
7.3	3	●	MVE0730X03S080	23.2	46.3	49.3	91.3	90	1.3	8	2
7.4	2	●	MVE0740X02S080	16.1	35.3	38.3	80.3	79	1.3	8	2
7.4	3	●	MVE0740X03S080	23.5	46.3	49.3	91.3	90	1.3	8	2
7.5	2	●	MVE0750X02S080	16.4	35.4	38.4	80.4	79	1.4	8	2
7.5	3	●	MVE0750X03S080	23.9	46.4	49.4	91.4	90	1.4	8	2
7.6	2	●	MVE0760X02S080	16.6	38.4	38.4	80.4	79	1.4	8	2
7.6	3	●	MVE0760X03S080	24.2	49.4	49.4	91.4	90	1.4	8	2
7.7	2	●	MVE0770X02S080	16.8	38.4	38.4	80.4	79	1.4	8	2
7.7	3	●	MVE0770X03S080	24.5	49.4	49.4	91.4	90	1.4	8	2
7.8	2	●	MVE0780X02S080	17.0	38.4	38.4	80.4	79	1.4	8	2
7.8	3	●	MVE0780X03S080	24.8	49.4	49.4	91.4	90	1.4	8	2

FURAÇÃO(METAL DURO INTEIRIÇO)

MVE

BROCAS WSTAR

METAL DURO

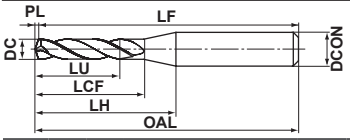
DC (mm)	Prof. do Furo (L/D)	DP1020	Referência para Pedido	Dimensões (mm)							Tipo
				LU	LCF	LH	OAL	LF	PL	DCON	
7.9	2	●	MVE0790X02S080	17.2	38.4	38.4	80.4	79	1.4	8	2
7.9	3	●	MVE0790X03S080	25.1	49.4	49.4	91.4	90	1.4	8	2
8.0	2	●	MVE0800X02S080	17.5	38.5	38.5	80.5	79	1.5	8	2
8.0	3	●	MVE0800X03S080	25.5	49.5	49.5	91.5	90	1.5	8	2
8.1	2	●	MVE0810X02S090	17.7	38.5	41.5	85.5	84	1.5	9	2
8.1	2	●	MVE0810X02S100	17.7	38.5	41.5	85.5	84	1.5	10	2
8.1	3	●	MVE0810X03S090	25.8	54.5	57.5	99.5	98	1.5	9	2
8.1	3	●	MVE0810X03S100	25.8	54.5	57.5	99.5	98	1.5	10	2
8.2	2	●	MVE0820X02S090	17.9	38.5	41.5	85.5	84	1.5	9	2
8.2	2	●	MVE0820X02S100	17.9	38.5	41.5	85.5	84	1.5	10	2
8.2	3	●	MVE0820X03S090	26.1	54.5	57.5	99.5	98	1.5	9	2
8.2	3	●	MVE0820X03S100	26.1	54.5	57.5	99.5	98	1.5	10	2
8.3	2	●	MVE0830X02S090	18.1	38.5	41.5	85.5	84	1.5	9	2
8.3	2	●	MVE0830X02S100	18.1	38.5	41.5	85.5	84	1.5	10	2
8.3	3	●	MVE0830X03S090	26.4	54.5	57.5	99.5	98	1.5	9	2
8.3	3	●	MVE0830X03S100	26.4	54.5	57.5	99.5	98	1.5	10	2
8.4	2	●	MVE0840X02S090	18.3	38.5	41.5	85.5	84	1.5	9	2
8.4	2	●	MVE0840X02S100	18.3	38.5	41.5	85.5	84	1.5	10	2
8.4	3	●	MVE0840X03S090	26.7	54.5	57.5	99.5	98	1.5	9	2
8.4	3	●	MVE0840X03S100	26.7	54.5	57.5	99.5	98	1.5	10	2
8.5	2	●	MVE0850X02S090	18.5	38.5	41.5	85.5	84	1.5	9	2
8.5	2	●	MVE0850X02S100	18.5	38.5	41.5	85.5	84	1.5	10	2
8.5	3	●	MVE0850X03S090	27.0	54.5	57.5	99.5	98	1.5	9	2
8.5	3	●	MVE0850X03S100	27.0	54.5	57.5	99.5	98	1.5	10	2
8.6	2	●	MVE0860X02S090	18.8	41.6	41.6	85.6	84	1.6	9	2
8.6	2	●	MVE0860X02S100	18.8	41.6	43.6	85.6	84	1.6	10	2
8.6	3	●	MVE0860X03S090	27.4	56.6	56.6	99.6	98	1.6	9	2
8.6	3	●	MVE0860X03S100	27.4	56.6	58.6	99.6	98	1.6	10	2
8.7	2	●	MVE0870X02S090	19.0	41.6	41.6	85.6	84	1.6	9	2
8.7	2	●	MVE0870X02S100	19.0	41.6	43.6	85.6	84	1.6	10	2
8.7	3	●	MVE0870X03S090	27.7	56.6	56.6	99.6	98	1.6	9	2
8.7	3	●	MVE0870X03S100	27.7	56.6	58.6	99.6	98	1.6	10	2
8.8	2	●	MVE0880X02S090	19.2	41.6	41.6	85.6	84	1.6	9	2
8.8	2	●	MVE0880X02S100	19.2	41.6	43.6	85.6	84	1.6	10	2
8.8	3	●	MVE0880X03S090	28.0	56.6	56.6	99.6	98	1.6	9	2
8.8	3	●	MVE0880X03S100	28.0	56.6	58.6	99.6	98	1.6	10	2
8.9	2	●	MVE0890X02S090	19.4	41.6	41.6	85.6	84	1.6	9	2
8.9	2	●	MVE0890X02S100	19.4	41.6	43.6	85.6	84	1.6	10	2
8.9	3	●	MVE0890X03S090	28.3	56.6	56.6	99.6	98	1.6	9	2
8.9	3	●	MVE0890X03S100	28.3	56.6	58.6	99.6	98	1.6	10	2
9.0	2	●	MVE0900X02S090	19.6	41.6	41.6	85.6	84	1.6	9	2
9.0	2	●	MVE0900X02S100	19.6	41.6	43.6	85.6	84	1.6	10	2
9.0	3	●	MVE0900X03S090	28.6	56.6	56.6	99.6	98	1.6	9	2
9.0	3	●	MVE0900X03S100	28.6	56.6	58.6	99.6	98	1.6	10	2
9.1	2	●	MVE0910X02S100	19.9	41.7	44.7	90.7	89	1.7	10	2
9.1	3	●	MVE0910X03S100	29.0	59.7	62.7	106.7	105	1.7	10	2
9.2	2	●	MVE0920X02S100	20.1	41.7	44.7	90.7	89	1.7	10	2
9.2	3	●	MVE0920X03S100	29.3	59.7	62.7	106.7	105	1.7	10	2

DC (mm)	Prof. do Furo (L/D)	DP1020	Referência para Pedido	Dimensões (mm)							Tipo
				LU	LCF	LH	OAL	LF	PL	DCON	
9.3	2	●	MVE0930X02S100	20.3	41.7	44.7	90.7	89	1.7	10	2
9.3	3	●	MVE0930X03S100	29.6	59.7	62.7	106.7	105	1.7	10	2
9.4	2	●	MVE0940X02S100	20.5	41.7	44.7	90.7	89	1.7	10	2
9.4	3	●	MVE0940X03S100	29.9	59.7	62.7	106.7	105	1.7	10	2
9.5	2	●	MVE0950X02S100	20.7	41.7	44.7	90.7	89	1.7	10	2
9.5	3	●	MVE0950X03S100	30.2	59.7	62.7	106.7	105	1.7	10	2
9.6	2	●	MVE0960X02S100	20.9	44.7	44.7	90.7	89	1.7	10	2
9.6	3	●	MVE0960X03S100	30.5	61.7	61.7	106.7	105	1.7	10	2
9.7	2	●	MVE0970X02S100	21.2	44.8	44.8	90.8	89	1.8	10	2
9.7	3	●	MVE0970X03S100	30.9	61.8	61.8	106.8	105	1.8	10	2
9.8	2	●	MVE0980X02S100	21.4	44.8	44.8	90.8	89	1.8	10	2
9.8	3	●	MVE0980X03S100	31.2	61.8	61.8	106.8	105	1.8	10	2
9.9	2	●	MVE0990X02S100	21.6	44.8	44.8	90.8	89	1.8	10	2
9.9	3	●	MVE0990X03S100	31.5	61.8	61.8	106.8	105	1.8	10	2
10.0	2	●	MVE1000X02S100	21.8	44.8	44.8	90.8	89	1.8	10	2
10.0	3	●	MVE1000X03S100	31.8	61.8	61.8	106.8	105	1.8	10	2
10.1	2	●	MVE1010X02S110	22.0	44.8	47.8	96.8	95	1.8	11	2
10.1	2	●	MVE1010X02S120	22.0	44.8	47.8	96.8	95	1.8	12	2
10.1	3	●	MVE1010X03S110	32.1	67.8	70.8	115.8	114	1.8	11	2
10.1	3	●	MVE1010X03S120	32.1	67.8	70.8	115.8	114	1.8	12	2
10.2	2	●	MVE1020X02S110	22.3	44.9	47.9	96.9	95	1.9	11	2
10.2	2	●	MVE1020X02S120	22.3	44.9	47.9	96.9	95	1.9	12	2
10.2	3	●	MVE1020X03S110	32.5	67.9	70.9	115.9	114	1.9	11	2
10.2	3	●	MVE1020X03S120	32.5	67.9	70.9	115.9	114	1.9	12	2
10.3	2	●	MVE1030X02S110	22.5	44.9	47.9	96.9	95	1.9	11	2
10.3	2	●	MVE1030X02S120	22.5	44.9	47.9	96.9	95	1.9	12	2
10.3	3	●	MVE1030X03S110	32.8	67.9	70.9	115.9	114	1.9	11	2
10.3	3	●	MVE1030X03S120	32.8	67.9	70.9	115.9	114	1.9	12	2
10.4	2	●	MVE1040X02S110	22.7	44.9	47.9	96.9	95	1.9	11	2
10.4	2	●	MVE1040X02S120	22.7	44.9	47.9	96.9	95	1.9	12	2
10.4	3	●	MVE1040X03S110	33.1	67.9	70.9	115.9	114	1.9	11	2
10.4	3	●	MVE1040X03S120	33.1	67.9	70.9	115.9	114	1.9	12	2
10.5	2	●	MVE1050X02S110	22.9	44.9	47.9	96.9	95	1.9	11	2
10.5	2	●	MVE1050X02S120	22.9	44.9	47.9	96.9	95	1.9	12	2
10.5	3	●	MVE1050X03S110	33.4	67.9	70.9	115.9	114	1.9	11	2
10.5	3	●	MVE1050X03S120	33.4	67.9	70.9	115.9	114	1.9	12	2
10.6	2	●	MVE1060X02S110	23.1	48.9	48.9	96.9	95	1.9	11	2
10.6	2	●	MVE1060X02S120	23.1	48.9	49.9	96.9	95	1.9	12	2
10.6	3	●	MVE1060X03S110	33.7	69.9	69.9	115.9	114	1.9	11	2
10.6	3	●	MVE1060X03S120	33.7	69.9	70.9	115.9	114	1.9	12	2
10.7	2	●	MVE1070X02S110	23.3	48.9	48.9	96.9	95	1.9	11	2
10.7	2	●	MVE1070X02S120	23.3	48.9	49.9	96.9	95	1.9	12	2
10.7	3	●	MVE1070X03S110	34.0	69.9	69.9	115.9	114	1.9	11	2
10.7	3	●	MVE1070X03S120	34.0	69.9	70.9	115.9	114	1.9	12	2
10.8	2	●	MVE1080X02S110	23.6	49.0	49.0	97.0	95	2.0	11	2
10.8	2	●	MVE1080X02S120	23.6	49.0	50.0	97.0	95	2.0	12	2
10.8	3	●	MVE1080X03S110	34.4	70.0	70.0	116.0	114	2.0	11	2
10.8	3	●	MVE1080X03S120	34.4	70.0	71.0	116.0	114	2.0	12	2

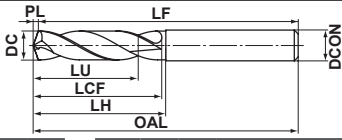
● : Estoque mantido. □ : Sem estoque, produzido somente por pedido.

□ : Lote mínimo para produtos especiais:

① Menor que ø3 = Mínimo 10 ② Maior ou igual a ø3 e menor que ø10 = Mínimo 5
 ③ Maior ou igual a ø10 = Mínimo 3



Tipo1



Tipo2

DC (mm)	Prof. do Furo (L/D)	DP1020	Referência para Pedido	Dimensões (mm)								Tipo
				LU	LCF	LH	OAL	LF	PL	DCON		
10.9	2	●	MVE1090X02S110	23.8	49.0	49.0	97.0	95	2.0	11	2	
10.9	2	●	MVE1090X02S120	23.8	49.0	50.0	97.0	95	2.0	12	2	
10.9	3	●	MVE1090X03S110	34.7	70.0	70.0	116.0	114	2.0	11	2	
10.9	3	●	MVE1090X03S120	34.7	70.0	71.0	116.0	114	2.0	12	2	
11.0	2	●	MVE1100X02S110	24.0	49.0	49.0	97.0	95	2.0	11	2	
11.0	2	●	MVE1100X02S120	24.0	49.0	50.0	97.0	95	2.0	12	2	
11.0	3	●	MVE1100X03S110	35.0	70.0	70.0	116.0	114	2.0	11	2	
11.0	3	●	MVE1100X03S120	35.0	70.0	71.0	116.0	114	2.0	12	2	
11.1	2	●	MVE1110X02S120	24.2	49.0	52.0	97.0	95	2.0	12	2	
11.1	3	●	MVE1110X03S120	35.3	73.0	76.0	123.0	121	2.0	12	2	
11.2	2	●	MVE1120X02S120	24.4	49.0	52.0	97.0	95	2.0	12	2	
11.2	3	●	MVE1120X03S120	35.6	73.0	76.0	123.0	121	2.0	12	2	
11.3	2	●	MVE1130X02S120	24.7	49.1	52.1	97.1	95	2.1	12	2	
11.3	3	●	MVE1130X03S120	36.0	73.1	76.1	123.1	121	2.1	12	2	
11.4	2	●	MVE1140X02S120	24.9	49.1	52.1	97.1	95	2.1	12	2	
11.4	3	●	MVE1140X03S120	36.3	73.1	76.1	123.1	121	2.1	12	2	
11.5	2	●	MVE1150X02S120	25.1	49.1	52.1	97.1	95	2.1	12	2	
11.5	3	●	MVE1150X03S120	36.6	73.1	76.1	123.1	121	2.1	12	2	
11.6	2	●	MVE1160X02S120	25.3	49.1	49.1	97.1	95	2.1	12	2	
11.6	3	●	MVE1160X03S120	36.9	75.1	75.1	123.1	121	2.1	12	2	
11.7	2	●	MVE1170X02S120	25.5	49.1	49.1	97.1	95	2.1	12	2	
11.7	3	●	MVE1170X03S120	37.2	75.1	75.1	123.1	121	2.1	12	2	
11.8	2	●	MVE1180X02S120	25.7	49.1	49.1	97.1	95	2.1	12	2	
11.8	3	●	MVE1180X03S120	37.5	75.1	75.1	123.1	121	2.1	12	2	
11.9	2	●	MVE1190X02S120	26.0	49.2	49.2	97.2	95	2.2	12	2	
11.9	3	●	MVE1190X03S120	37.9	75.2	75.2	123.2	121	2.2	12	2	
12.0	2	●	MVE1200X02S120	26.2	49.2	49.2	97.2	95	2.2	12	2	
12.0	3	●	MVE1200X03S120	38.2	75.2	75.2	123.2	121	2.2	12	2	
12.1	2	●	MVE1210X02S130	26.4	53.2	56.2	104.2	102	2.2	13	2	
12.1	2	□	MVE1210X02S140	26.4	53.2	56.2	104.2	102	2.2	14	2	
12.1	3	●	MVE1210X03S130	38.5	78.2	81.2	139.2	137	2.2	13	2	
12.1	3	□	MVE1210X03S140	38.5	78.2	81.2	139.2	137	2.2	14	2	
12.2	2	●	MVE1220X02S130	26.6	53.2	56.2	104.2	102	2.2	13	2	
12.2	2	□	MVE1220X02S140	26.6	53.2	56.2	104.2	102	2.2	14	2	
12.2	3	●	MVE1220X03S130	38.8	78.2	81.2	139.2	137	2.2	13	2	
12.2	3	□	MVE1220X03S140	38.8	78.2	81.2	139.2	137	2.2	14	2	
12.3	2	●	MVE1230X02S130	26.8	53.2	56.2	104.2	102	2.2	13	2	
12.3	2	□	MVE1230X02S140	26.8	53.2	56.2	104.2	102	2.2	14	2	
12.3	3	●	MVE1230X03S130	39.1	78.2	81.2	139.2	137	2.2	13	2	
12.3	3	□	MVE1230X03S140	39.1	78.2	81.2	139.2	137	2.2	14	2	
12.4	2	●	MVE1240X02S130	27.1	53.3	56.3	104.3	102	2.3	13	2	
12.4	2	□	MVE1240X02S140	27.1	53.3	56.3	104.3	102	2.3	14	2	
12.4	3	●	MVE1240X03S130	39.5	78.3	81.3	139.3	137	2.3	13	2	
12.4	3	□	MVE1240X03S140	39.5	78.3	81.3	139.3	137	2.3	14	2	
12.5	2	●	MVE1250X02S130	27.3	53.3	56.3	104.3	102	2.3	13	2	
12.5	2	□	MVE1250X02S140	27.3	53.3	56.3	104.3	102	2.3	14	2	
12.5	3	●	MVE1250X03S130	39.8	78.3	81.3	139.3	137	2.3	13	2	
12.5	3	□	MVE1250X03S140	39.8	78.3	81.3	139.3	137	2.3	14	2	

DC (mm)	Prof. do Furo (L/D)	DP1020	Referência para Pedido	Dimensões (mm)								Tipo
				LU	LCF	LH	OAL	LF	PL	DCON		
12.6	2	●	MVE1260X02S130	27.5	53.3	53.3	104.3	102	2.3	13	2	
12.6	2	□	MVE1260X02S140	27.5	53.3	53.3	104.3	102	2.3	14	2	
12.6	3	●	MVE1260X03S130	40.1	80.3	80.3	139.3	137	2.3	13	2	
12.6	3	□	MVE1260X03S140	40.1	80.3	80.3	139.3	137	2.3	14	2	
12.7	2	●	MVE1270X02S130	27.7	53.3	53.3	104.3	102	2.3	13	2	
12.7	2	□	MVE1270X02S140	27.7	53.3	53.3	104.3	102	2.3	14	2	
12.7	3	●	MVE1270X03S130	40.4	80.3	80.3	139.3	137	2.3	13	2	
12.7	3	□	MVE1270X03S140	40.4	80.3	80.3	139.3	137	2.3	14	2	
12.8	2	●	MVE1280X02S130	27.9	53.3	53.3	104.3	102	2.3	13	2	
12.8	2	□	MVE1280X02S140	27.9	53.3	53.3	104.3	102	2.3	14	2	
12.8	3	●	MVE1280X03S130	40.7	80.3	80.3	139.3	137	2.3	13	2	
12.8	3	□	MVE1280X03S140	40.7	80.3	80.3	139.3	137	2.3	14	2	
12.9	2	●	MVE1290X02S130	28.1	53.3	53.3	104.3	102	2.3	13	2	
12.9	2	□	MVE1290X02S140	28.1	53.3	53.3	104.3	102	2.3	14	2	
12.9	3	●	MVE1290X03S130	41.0	80.3	80.3	139.3	137	2.3	13	2	
12.9	3	□	MVE1290X03S140	41.0	80.3	80.3	139.3	137	2.3	14	2	
13.0	2	●	MVE1300X02S130	28.4	53.4	53.4	104.4	102	2.4	13	2	
13.0	2	□	MVE1300X02S140	28.4	53.4	53.4	104.4	102	2.4	14	2	
13.0	3	●	MVE1300X03S130	41.4	80.4	80.4	139.4	137	2.4	13	2	
13.0	3	□	MVE1300X03S140	41.4	80.4	80.4	139.4	137	2.4	14	2	
13.1	2	●	MVE1310X02S140	28.6	56.4	59.4	109.4	107	2.4	14	2	
13.1	3	●	MVE1310X03S140	41.7	86.4	89.4	149.4	147	2.4	14	2	
13.2	2	●	MVE1320X02S140	28.8	56.4	59.4	109.4	107	2.4	14	2	
13.2	3	●	MVE1320X03S140	42.0	86.4	89.4	149.4	147	2.4	14	2	
13.3	2	●	MVE1330X02S140	29.0	56.4	59.4	109.4	107	2.4	14	2	
13.3	3	●	MVE1330X03S140	42.3	86.4	89.4	149.4	147	2.4	14	2	
13.4	2	●	MVE1340X02S140	29.2	56.4	59.4	109.4	107	2.4	14	2	
13.4	3	●	MVE1340X03S140	42.6	86.4	89.4	149.4	147	2.4	14	2	
13.5	2	●	MVE1350X02S140	29.5	56.5	59.5	109.5	107	2.5	14	2	
13.5	3	●	MVE1350X03S140	43.0	86.5	89.5	149.5	147	2.5	14	2	
13.6	2	●	MVE1360X02S140	29.7	56.5	56.5	109.5	107	2.5	14	2	
13.6	3	●	MVE1360X03S140	43.3	88.5	88.5	149.5	147	2.5	14	2	
13.7	2	●	MVE1370X02S140	29.9	56.5	56.5	109.5	107	2.5	14	2	
13.7	3	●	MVE1370X03S140	43.6	88.5	88.5	149.5	147	2.5	14	2	
13.8	2	●	MVE1380X02S140	30.1	56.5	56.5	109.5	107	2.5	14	2	
13.8	3	●	MVE1380X03S140	43.9	88.5	88.5	149.5	147	2.5	14	2	
13.9	2	●	MVE1390X02S140	30.3	56.5	56.5	109.5	107	2.5	14	2	
13.9	3	●	MVE1390X03S140	44.2	88.5	88.5	149.5	147	2.5	14	2	
14.0	2	●	MVE1400X02S140	30.5	56.5	56.5	109.5	107	2.5	14	2	
14.0	3	●	MVE1400X03S140	44.5	88.5	88.5	149.5	147	2.5	14	2	
14.1	2	●	MVE1410X02S150	30.8	58.6	61.6	113.6	111	2.6	15	2	
14.1	2	□	MVE1410X02S160	30.8	58.6	61.6	113.6	111	2.6	16	2	
14.1	3	●	MVE1410X03S150	44.9	91.6	94.6	155.6	153	2.6	15	2	
14.1	3	□	MVE1410X03S160	44.9	91.6	94.6	155.6	153	2.6	16	2	
14.2	2	●	MVE1420X02S150	31.0	58.6	61.6	113.6	111	2.6	15	2	
14.2	2	□	MVE1420X02S160	31.0	58.6	61.6	113.6	111	2.6	16	2	
14.2	3	●	MVE1420X03S150	45.2	91.6	94.6	155.6	153	2.6	15	2	
14.2	3	□	MVE1420X03S160	45.2	91.6	94.6	155.6	153	2.6	16	2	

FURAÇÃO(METAL DURO INTEIRIÇO)

MVE

BROCAS WSTAR

METAL DURO

DC (mm)	Prof. do Furo (L/D)	DP1020	Referência para Pedido	Dimensões (mm)							Tipo
				LU	LCF	LH	OAL	LF	PL	DCON	
14.3	2	□	MVE1430X02S150	31.2	58.6	61.6	113.6	111	2.6	15	2
14.3	2	□	MVE1430X02S160	31.2	58.6	61.6	113.6	111	2.6	16	2
14.3	3	●	MVE1430X03S150	45.5	91.6	94.6	155.6	153	2.6	15	2
14.3	3	□	MVE1430X03S160	45.5	91.6	94.6	155.6	153	2.6	16	2
14.4	2	□	MVE1440X02S150	31.4	58.6	61.6	113.6	111	2.6	15	2
14.4	2	□	MVE1440X02S160	31.4	58.6	61.6	113.6	111	2.6	16	2
14.4	3	●	MVE1440X03S150	45.8	91.6	94.6	155.6	153	2.6	15	2
14.4	3	□	MVE1440X03S160	45.8	91.6	94.6	155.6	153	2.6	16	2
14.5	2	●	MVE1450X02S150	31.6	58.6	61.6	113.6	111	2.6	15	2
14.5	2	□	MVE1450X02S160	31.6	58.6	61.6	113.6	111	2.6	16	2
14.5	3	●	MVE1450X03S150	46.1	91.6	94.6	155.6	153	2.6	15	2
14.5	3	□	MVE1450X03S160	46.1	91.6	94.6	155.6	153	2.6	16	2
14.6	2	□	MVE1460X02S150	31.9	58.7	58.7	113.7	111	2.7	15	2
14.6	2	□	MVE1460X02S160	31.9	58.7	58.7	113.7	111	2.7	16	2
14.6	3	●	MVE1460X03S150	46.5	93.7	93.7	155.7	153	2.7	15	2
14.6	3	□	MVE1460X03S160	46.5	93.7	93.7	155.7	153	2.7	16	2
14.7	2	□	MVE1470X02S150	32.1	58.7	58.7	113.7	111	2.7	15	2
14.7	2	□	MVE1470X02S160	32.1	58.7	58.7	113.7	111	2.7	16	2
14.7	3	●	MVE1470X03S150	46.8	93.7	93.7	155.7	153	2.7	15	2
14.7	3	□	MVE1470X03S160	46.8	93.7	93.7	155.7	153	2.7	16	2
14.8	2	□	MVE1480X02S150	32.3	58.7	58.7	113.7	111	2.7	15	2
14.8	2	□	MVE1480X02S160	32.3	58.7	58.7	113.7	111	2.7	16	2
14.8	3	●	MVE1480X03S150	47.1	93.7	93.7	155.7	153	2.7	15	2
14.8	3	□	MVE1480X03S160	47.1	93.7	93.7	155.7	153	2.7	16	2
14.9	2	□	MVE1490X02S150	32.5	58.7	58.7	113.7	111	2.7	15	2
14.9	2	□	MVE1490X02S160	32.5	58.7	58.7	113.7	111	2.7	16	2
14.9	3	●	MVE1490X03S150	47.4	93.7	93.7	155.7	153	2.7	15	2
14.9	3	□	MVE1490X03S160	47.4	93.7	93.7	155.7	153	2.7	16	2
15.0	2	●	MVE1500X02S150	32.7	58.7	58.7	113.7	111	2.7	15	2
15.0	2	□	MVE1500X02S160	32.7	58.7	58.7	113.7	111	2.7	16	2
15.0	3	●	MVE1500X03S150	47.7	93.7	93.7	155.7	153	2.7	15	2
15.0	3	□	MVE1500X03S160	47.7	93.7	93.7	155.7	153	2.7	16	2
15.1	2	□	MVE1510X02S160	32.9	60.7	63.7	117.7	115	2.7	16	2
15.1	3	●	MVE1510X03S160	48.0	96.7	99.7	162.7	160	2.7	16	2
15.2	2	●	MVE1520X02S160	33.2	60.8	63.8	117.8	115	2.8	16	2
15.2	3	●	MVE1520X03S160	48.4	96.8	99.8	162.8	160	2.8	16	2
15.3	2	□	MVE1530X02S160	33.4	60.8	63.8	117.8	115	2.8	16	2
15.3	3	●	MVE1530X03S160	48.7	96.8	99.8	162.8	160	2.8	16	2
15.4	2	□	MVE1540X02S160	33.6	60.8	63.8	117.8	115	2.8	16	2
15.4	3	●	MVE1540X03S160	49.0	96.8	99.8	162.8	160	2.8	16	2
15.5	2	●	MVE1550X02S160	33.8	60.8	63.8	117.8	115	2.8	16	2
15.5	3	●	MVE1550X03S160	49.3	96.8	99.8	162.8	160	2.8	16	2
15.6	2	□	MVE1560X02S160	34.0	60.8	60.8	117.8	115	2.8	16	2
15.6	3	●	MVE1560X03S160	49.6	98.8	98.8	162.8	160	2.8	16	2
15.7	2	□	MVE1570X02S160	34.3	60.9	60.9	117.9	115	2.9	16	2
15.7	3	●	MVE1570X03S160	50.0	98.9	98.9	162.9	160	2.9	16	2
15.8	2	□	MVE1580X02S160	34.5	60.9	60.9	117.9	115	2.9	16	2
15.8	3	●	MVE1580X03S160	50.3	98.9	98.9	162.9	160	2.9	16	2

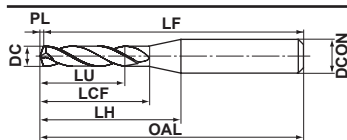
DC (mm)	Prof. do Furo (L/D)	DP1020	Referência para Pedido	Dimensões (mm)							Tipo
				LU	LCF	LH	OAL	LF	PL	DCON	
15.9	2	□	MVE1590X02S160	34.7	60.9	60.9	117.9	115	2.9	16	2
15.9	3	●	MVE1590X03S160	50.6	98.9	98.9	162.9	160	2.9	16	2
16.0	2	●	MVE1600X02S160	34.9	60.9	60.9	117.9	115	2.9	16	2
16.0	3	●	MVE1600X03S160	50.9	98.9	98.9	162.9	160	2.9	16	2
16.1	2	□	MVE1610X02S170	35.1	62.9	62.9	121.9	119	2.9	17	2
16.1	2	□	MVE1610X02S180	35.1	62.9	62.9	121.9	119	2.9	18	2
16.1	3	□	MVE1610X03S170	51.2	104.9	104.9	169.9	167	2.9	17	2
16.1	3	□	MVE1610X03S180	51.2	104.9	104.9	169.9	167	2.9	18	2
16.2	2	●	MVE1620X02S170	35.3	62.9	62.9	121.9	119	2.9	17	2
16.2	2	□	MVE1620X02S180	35.3	62.9	62.9	121.9	119	2.9	18	2
16.2	3	□	MVE1620X03S170	51.5	104.9	104.9	169.9	167	2.9	17	2
16.2	3	□	MVE1620X03S180	51.5	104.9	104.9	169.9	167	2.9	18	2
16.3	2	●	MVE1630X02S170	35.6	63.0	63.0	122.0	119	3.0	17	2
16.3	2	□	MVE1630X02S180	35.6	63.0	63.0	122.0	119	3.0	18	2
16.3	3	□	MVE1630X03S170	51.9	105.0	105.0	170.0	167	3.0	17	2
16.3	3	□	MVE1630X03S180	51.9	105.0	105.0	170.0	167	3.0	18	2
16.4	2	□	MVE1640X02S170	35.8	63.0	63.0	122.0	119	3.0	17	2
16.4	2	□	MVE1640X02S180	35.8	63.0	63.0	122.0	119	3.0	18	2
16.4	3	□	MVE1640X03S170	52.2	105.0	105.0	170.0	167	3.0	17	2
16.4	3	□	MVE1640X03S180	52.2	105.0	105.0	170.0	167	3.0	18	2
16.5	2	●	MVE1650X02S170	36.0	63.0	63.0	122.0	119	3.0	17	2
16.5	2	□	MVE1650X02S180	36.0	63.0	63.0	122.0	119	3.0	18	2
16.5	3	●	MVE1650X03S170	52.5	105.0	105.0	170.0	167	3.0	17	2
16.5	3	□	MVE1650X03S180	52.5	105.0	105.0	170.0	167	3.0	18	2
16.6	2	□	MVE1660X02S170	36.2	63.0	63.0	122.0	119	3.0	17	2
16.6	2	□	MVE1660X02S180	36.2	63.0	63.0	122.0	119	3.0	18	2
16.6	3	□	MVE1660X03S170	52.8	105.0	105.0	170.0	167	3.0	17	2
16.6	3	□	MVE1660X03S180	52.8	105.0	105.0	170.0	167	3.0	18	2
16.7	2	□	MVE1670X02S170	36.4	63.0	63.0	122.0	119	3.0	17	2
16.7	2	□	MVE1670X02S180	36.4	63.0	63.0	122.0	119	3.0	18	2
16.7	3	□	MVE1670X03S170	53.1	105.0	105.0	170.0	167	3.0	17	2
16.7	3	□	MVE1670X03S180	53.1	105.0	105.0	170.0	167	3.0	18	2
16.8	2	□	MVE1680X02S170	36.7	63.1	63.1	122.1	119	3.1	17	2
16.8	2	□	MVE1680X02S180	36.7	63.1	63.1	122.1	119	3.1	18	2
16.8	3	□	MVE1680X03S170	53.5	105.1	105.1	170.1	167	3.1	17	2
16.8	3	□	MVE1680X03S180	53.5	105.1	105.1	170.1	167	3.1	18	2
16.9	2	□	MVE1690X02S170	36.9	63.1	63.1	122.1	119	3.1	17	2
16.9	2	□	MVE1690X02S180	36.9	63.1	63.1	122.1	119	3.1	18	2
16.9	3	□	MVE1690X03S170	53.8	105.1	105.1	170.1	167	3.1	17	2
16.9	3	□	MVE1690X03S180	53.8	105.1	105.1	170.1	167	3.1	18	2
17.0	2	●	MVE1700X02S170	37.1	63.1	63.1	122.1	119	3.1	17	2
17.0	2	□	MVE1700X02S180	37.1	63.1	63.1	122.1	119	3.1	18	2
17.0	3	●	MVE1700X03S170	54.1	105.1	105.1	170.1	167	3.1	17	2
17.0	3	□	MVE1700X03S180	54.1	105.1	105.1	170.1	167	3.1	18	2
17.1	2	□	MVE1710X02S180	37.3	65.1	65.1	126.1	123	3.1	18	2
17.1	3	□	MVE1710X03S180	54.4	105.1	105.1	170.1	167	3.1	18	2
17.2	2	□	MVE1720X02S180	37.5	65.1	65.1	126.1	123	3.1	18	2
17.2	3	□	MVE1720X03S180	54.7	105.1	105.1	170.1	167	3.1	18	2

● : Estoque mantido. □ : Sem estoque, produzido somente por pedido.

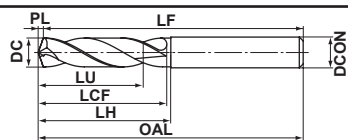
□ : Lote mínimo para produtos especiais:

① Menor que ø3 = Mínimo 10 ② Maior ou igual a ø3 e menor que ø10 = Mínimo 5

③ Maior ou igual a ø10 = Mínimo 3



Tipo1



Tipo2

DC (mm)	Prof. do Furo (L/D)	DP1020	Referência para Pedido	Dimensões (mm)							Tipo
				LU	LCF	LH	OAL	LF	PL	DCON	
17.3	2	□	MVE1730X02S180	37.7	65.1	65.1	126.1	123	3.1	18	2
17.3	3	□	MVE1730X03S180	55.0	105.1	105.1	170.1	167	3.1	18	2
17.4	2	□	MVE1740X02S180	38.0	65.2	65.2	126.2	123	3.2	18	2
17.4	3	□	MVE1740X03S180	55.4	105.2	105.2	170.2	167	3.2	18	2
17.5	2	●	MVE1750X02S180	38.2	65.2	65.2	126.2	123	3.2	18	2
17.5	3	●	MVE1750X03S180	55.7	105.2	105.2	170.2	167	3.2	18	2
17.6	2	□	MVE1760X02S180	38.4	65.2	65.2	126.2	123	3.2	18	2
17.6	3	□	MVE1760X03S180	56.0	105.2	105.2	170.2	167	3.2	18	2
17.7	2	□	MVE1770X02S180	38.6	65.2	65.2	126.2	123	3.2	18	2
17.7	3	□	MVE1770X03S180	56.3	105.2	105.2	170.2	167	3.2	18	2
17.8	2	●	MVE1780X02S180	38.8	65.2	65.2	126.2	123	3.2	18	2
17.8	3	□	MVE1780X03S180	56.6	105.2	105.2	170.2	167	3.2	18	2
17.9	2	□	MVE1790X02S180	39.1	65.3	65.3	126.3	123	3.3	18	2
17.9	3	□	MVE1790X03S180	57.0	105.3	105.3	170.3	167	3.3	18	2
18.0	2	●	MVE1800X02S180	39.3	65.3	65.3	126.3	123	3.3	18	2
18.0	3	●	MVE1800X03S180	57.3	105.3	105.3	170.3	167	3.3	18	2
18.1	2	□	MVE1810X02S190	39.5	67.3	67.3	130.3	127	3.3	19	2
18.1	2	□	MVE1810X02S200	39.5	67.3	67.3	130.3	127	3.3	20	2
18.1	3	□	MVE1810X03S190	57.6	117.3	117.3	182.3	179	3.3	19	2
18.1	3	□	MVE1810X03S200	57.6	117.3	117.3	182.3	179	3.3	20	2
18.2	2	□	MVE1820X02S190	39.7	67.3	67.3	130.3	127	3.3	19	2
18.2	2	□	MVE1820X02S200	39.7	67.3	67.3	130.3	127	3.3	20	2
18.2	3	□	MVE1820X03S190	57.9	117.3	117.3	182.3	179	3.3	19	2
18.2	3	□	MVE1820X03S200	57.9	117.3	117.3	182.3	179	3.3	20	2
18.3	2	□	MVE1830X02S190	39.9	67.3	67.3	130.3	127	3.3	19	2
18.3	2	□	MVE1830X02S200	39.9	67.3	67.3	130.3	127	3.3	20	2
18.3	3	□	MVE1830X03S190	58.2	117.3	117.3	182.3	179	3.3	19	2
18.3	3	□	MVE1830X03S200	58.2	117.3	117.3	182.3	179	3.3	20	2
18.4	2	□	MVE1840X02S190	40.1	67.3	67.3	130.3	127	3.3	19	2
18.4	2	□	MVE1840X02S200	40.1	67.3	67.3	130.3	127	3.3	20	2
18.4	3	□	MVE1840X03S190	58.5	117.3	117.3	182.3	179	3.3	19	2
18.4	3	□	MVE1840X03S200	58.5	117.3	117.3	182.3	179	3.3	20	2
18.5	2	●	MVE1850X02S190	40.4	67.4	67.4	130.4	127	3.4	19	2
18.5	2	□	MVE1850X02S200	40.4	67.4	67.4	130.4	127	3.4	20	2
18.5	3	●	MVE1850X03S190	58.9	117.4	117.4	182.4	179	3.4	19	2
18.5	3	□	MVE1850X03S200	58.9	117.4	117.4	182.4	179	3.4	20	2
18.6	2	□	MVE1860X02S190	40.6	67.4	67.4	130.4	127	3.4	19	2
18.6	2	□	MVE1860X02S200	40.6	67.4	67.4	130.4	127	3.4	20	2
18.6	3	□	MVE1860X03S190	59.2	117.4	117.4	182.4	179	3.4	19	2
18.6	3	□	MVE1860X03S200	59.2	117.4	117.4	182.4	179	3.4	20	2
18.7	2	□	MVE1870X02S190	40.8	67.4	67.4	130.4	127	3.4	19	2
18.7	2	□	MVE1870X02S200	40.8	67.4	67.4	130.4	127	3.4	20	2
18.7	3	□	MVE1870X03S190	59.5	117.4	117.4	182.4	179	3.4	19	2
18.7	3	□	MVE1870X03S200	59.5	117.4	117.4	182.4	179	3.4	20	2
18.8	2	□	MVE1880X02S190	41.0	67.4	67.4	130.4	127	3.4	19	2
18.8	2	□	MVE1880X02S200	41.0	67.4	67.4	130.4	127	3.4	20	2
18.8	3	□	MVE1880X03S190	59.8	117.4	117.4	182.4	179	3.4	19	2
18.8	3	□	MVE1880X03S200	59.8	117.4	117.4	182.4	179	3.4	20	2

DC (mm)	Prof. do Furo (L/D)	DP1020	Referência para Pedido	Dimensões (mm)							Tipo
				LU	LCF	LH	OAL	LF	PL	DCON	
18.9	2	□	MVE1890X02S190	41.2	67.4	67.4	130.4	127	3.4	19	2
18.9	2	□	MVE1890X02S200	41.2	67.4	67.4	130.4	127	3.4	20	2
18.9	3	□	MVE1890X03S190	60.1	117.4	117.4	182.4	179	3.4	19	2
18.9	3	□	MVE1890X03S200	60.1	117.4	117.4	182.4	179	3.4	20	2
19.0	2	●	MVE1900X02S190	41.5	67.5	67.5	130.5	127	3.5	19	2
19.0	2	□	MVE1900X02S200	41.5	67.5	67.5	130.5	127	3.5	20	2
19.0	3	●	MVE1900X03S190	60.5	117.5	117.5	182.5	179	3.5	19	2
19.0	3	□	MVE1900X03S200	60.5	117.5	117.5	182.5	179	3.5	20	2
19.1	2	□	MVE1910X02S200	41.7	69.5	69.5	134.5	131	3.5	20	2
19.1	3	□	MVE1910X03S200	60.8	117.5	117.5	182.5	179	3.5	20	2
19.2	2	□	MVE1920X02S200	41.9	69.5	69.5	134.5	131	3.5	20	2
19.2	3	□	MVE1920X03S200	61.1	117.5	117.5	182.5	179	3.5	20	2
19.3	2	□	MVE1930X02S200	42.1	69.5	69.5	134.5	131	3.5	20	2
19.3	3	□	MVE1930X03S200	61.4	117.5	117.5	182.5	179	3.5	20	2
19.4	2	□	MVE1940X02S200	42.3	69.5	69.5	134.5	131	3.5	20	2
19.4	3	□	MVE1940X03S200	61.7	117.5	117.5	182.5	179	3.5	20	2
19.5	2	●	MVE1950X02S200	42.5	69.5	69.5	134.5	131	3.5	20	2
19.5	3	●	MVE1950X03S200	62.0	117.5	117.5	182.5	179	3.5	20	2
19.6	2	□	MVE1960X02S200	42.8	69.6	69.6	134.6	131	3.6	20	2
19.6	3	□	MVE1960X03S200	62.4	117.6	117.6	182.6	179	3.6	20	2
19.7	2	□	MVE1970X02S200	43.0	69.6	69.6	134.6	131	3.6	20	2
19.7	3	□	MVE1970X03S200	62.7	117.6	117.6	182.6	179	3.6	20	2
19.8	2	□	MVE1980X02S200	43.2	69.6	69.6	134.6	131	3.6	20	2
19.8	3	□	MVE1980X03S200	63.0	117.6	117.6	182.6	179	3.6	20	2
19.9	2	□	MVE1990X02S200	43.4	69.6	69.6	134.6	131	3.6	20	2
19.9	3	□	MVE1990X03S200	63.3	117.6	117.6	182.6	179	3.6	20	2
20.0	2	●	MVE2000X02S200	43.6	69.6	69.6	134.6	131	3.6	20	2
20.0	3	●	MVE2000X03S200	63.6	117.6	117.6	182.6	179	3.6	20	2

FURAÇÃO(METAL DURO INTEIRIÇO)

MVE

BROCAS WSTAR

METAL DURO

CONDIÇÕES DE CORTE RECOMENDADAS

Material	Aço Baixo Carbono ($\leq 180\text{HB}$)		Aço Carbono, Aço Liga (180–280HB)		Aço Carbono, Aço Liga (280–350HB)	
	AISI 1010 etc		AISI 1045, AISI 4140 etc		AISI 4340 etc	
Diâm. DC (mm)	Rotação (min^{-1})	Taxa de Avanço (mín.–máx.) (mm/rot)	Rotação (min^{-1})	Taxa de Avanço (mín.–máx.) (mm/rot)	Rotação (min^{-1})	Taxa de Avanço (mín.–máx.) (mm/rot)
3.2	6400	0.1 (0.06–0.13)	5900	0.1 (0.06–0.13)	5400	0.09 (0.06–0.12)
4.0	5500	0.12 (0.08–0.16)	5100	0.12 (0.08–0.16)	4700	0.11 (0.07–0.14)
5.0	4400	0.15 (0.10–0.20)	4100	0.15 (0.10–0.20)	3800	0.14 (0.09–0.18)
6.3	4000	0.2 (0.13–0.26)	3700	0.2 (0.13–0.26)	3500	0.18 (0.11–0.24)
8.0	3300	0.23 (0.18–0.28)	3100	0.23 (0.18–0.28)	2900	0.21 (0.16–0.25)
10.0	2800	0.27 (0.22–0.32)	2700	0.27 (0.22–0.32)	2500	0.23 (0.19–0.27)
12.0	2500	0.31 (0.28–0.34)	2300	0.31 (0.28–0.34)	2200	0.26 (0.23–0.29)
16.0	1900	0.33 (0.28–0.38)	1700	0.33 (0.28–0.38)	1600	0.29 (0.24–0.33)
20.0	1500	0.35 (0.30–0.40)	1400	0.35 (0.30–0.40)	1300	0.3 (0.26–0.34)

Material	Aço Inoxidável Austenítico ($\leq 200\text{HB}$)		Ferro Fundido Cinzento ($\leq 350\text{MPa}$)		Ferro Fundido Nodular ($\leq 450\text{MPa}$)	
	AISI 304, AISI 316 etc		DIN GG-30 etc		DIN GGG-45 etc	
Diâm. DC (mm)	Rotação (min^{-1})	Taxa de Avanço (mín.–máx.) (mm/rot)	Rotação (min^{-1})	Taxa de Avanço (mín.–máx.) (mm/rot)	Rotação (min^{-1})	Taxa de Avanço (mín.–máx.) (mm/rot)
3.2	1900	0.07 (0.05–0.08)	6900	0.1 (0.06–0.13)	6400	0.1 (0.06–0.13)
4.0	1500	0.08 (0.06–0.10)	5500	0.12 (0.08–0.16)	5100	0.12 (0.08–0.16)
5.0	1200	0.1 (0.07–0.13)	4400	0.15 (0.10–0.20)	4100	0.15 (0.10–0.20)
6.3	1200	0.13 (0.09–0.17)	3700	0.2 (0.13–0.26)	3500	0.2 (0.13–0.26)
8.0	900	0.14 (0.10–0.18)	2900	0.25 (0.18–0.31)	2700	0.23 (0.18–0.28)
10.0	700	0.16 (0.12–0.19)	2300	0.29 (0.22–0.35)	2200	0.27 (0.22–0.32)
12.0	600	0.18 (0.15–0.20)	2100	0.33 (0.28–0.37)	1900	0.31 (0.28–0.34)
16.0	400	0.19 (0.15–0.23)	1500	0.35 (0.28–0.42)	1400	0.33 (0.28–0.38)
20.0	300	0.2 (0.15–0.24)	1300	0.37 (0.30–0.44)	1200	0.35 (0.30–0.40)

Material	Ligas de Alumínio (Si<5%)		Ligas Resistentes ao Calor		Aço Endurecido (40–55HRC)	
			Inconel718 etc		AISI H13, SKT4 etc	
Diâm. DC (mm)	Rotação (min^{-1})	Taxa de Avanço (mín.–máx.) (mm/rot)	Rotação (min^{-1})	Taxa de Avanço (mín.–máx.) (mm/rot)	Rotação (min^{-1})	Taxa de Avanço (mín.–máx.) (mm/rot)
3.2	7900	0.1 (0.06–0.13)	1900	0.07 (0.05–0.09)	1900	0.07 (0.05–0.09)
4.0	6300	0.12 (0.08–0.16)	1500	0.09 (0.06–0.11)	1500	0.09 (0.06–0.11)
5.0	5000	0.15 (0.10–0.20)	1200	0.11 (0.08–0.14)	1200	0.11 (0.08–0.14)
6.3	4500	0.2 (0.13–0.26)	1200	0.14 (0.09–0.19)	1200	0.14 (0.09–0.19)
8.0	3500	0.23 (0.18–0.28)	900	0.14 (0.11–0.17)	900	0.14 (0.11–0.17)
10.0	2800	0.27 (0.22–0.32)	700	0.16 (0.12–0.19)	700	0.16 (0.12–0.19)
12.0	2600	0.31 (0.28–0.34)	600	0.16 (0.13–0.18)	600	0.16 (0.13–0.18)
16.0	1900	0.33 (0.28–0.38)	400	0.18 (0.14–0.21)	400	0.18 (0.14–0.21)
20.0	1700	0.35 (0.30–0.40)	400	0.19 (0.15–0.22)	400	0.19 (0.15–0.22)

FURAÇÃO N